

THIS INSTRUMENT PREPARED BY:

Bowman CONSULTING

Bowman Consulting Group, Ltd. Phone: (772) 283-1413
301 S.E. Ocean Blvd. Suite 301 Fax: (772) 220-7887
Stuart, Florida 34994 www.bowmanconsulting.com
CERTIFICATE OF AUTHORIZATION NO. LB 8030

SHOPPES AT VILLAGE OF GOLF

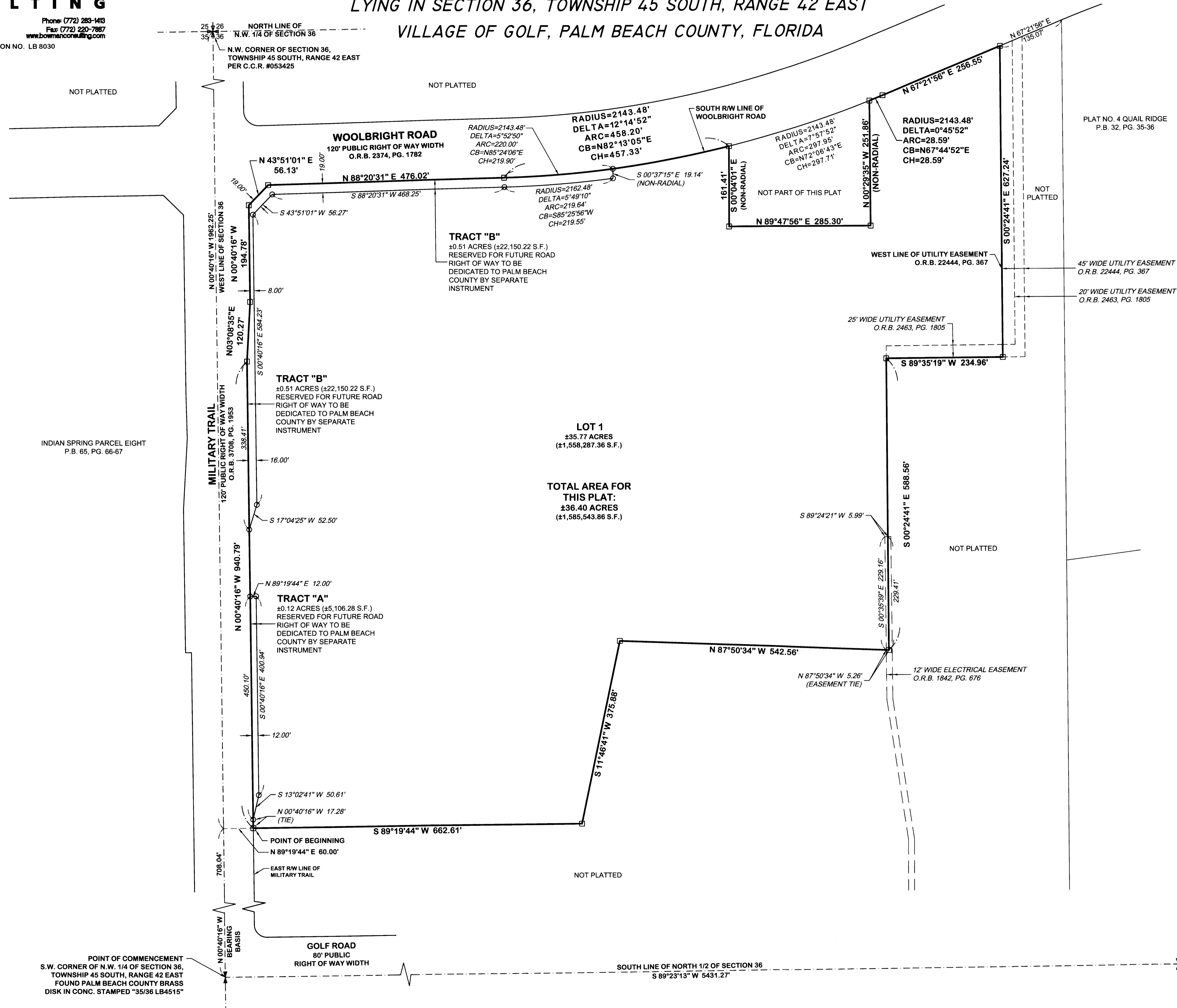
LYING IN SECTION 36, TOWNSHIP 45 SOUTH, RANGE 42 EAST

VILLAGE OF GOLF, PALM BEACH COUNTY, FLORIDA

0 100 200 Feet
THIS MAP IS INTENDED TO BE
DISPLAYED AT A SCALE OF 1" = 100'

145

SHEET 2 OF 2



ABBREVIATIONS:

- (C) CALCULATED DISTANCE
- CB CHORD BEARING
- CH CHORD DISTANCE
- CM CONCRETE MONUMENT
- C.C.R. CERTIFIED CORNER RECORD
- CONC. CONCRETE
- D.B. DEED BOOK
- DELTA CENTRAL ANGLE OF CURVE
- F.D.O.T. FLORIDA DEPARTMENT OF TRANSPORTATION
- ID IDENTIFICATION
- O.R.B. OFFICIAL RECORDS BOOK
- P.B. PLAT BOOK
- PG. PAGE
- P.R.M. PERMANENT REFERENCE MONUMENT
- R/W RIGHT OF WAY
- S.F. SQUARE FEET
- S.R. STATE ROAD

LEGEND:

- FOUND 4"x4" CONCRETE MONUMENT WITH IDENTIFICATION
- SET CONCRETE 4" x 4" CONCRETE MONUMENT STAMPED "PRM LB8030"
- FOUND IRON ROD OR PIPE WITH IDENTIFICATION
- SET 5/8" IRON ROD WITH CAP STAMPED "BOWMAN CG LB8030"
- ⊕ FOUND 1/4 SECTION CORNER WITH IDENTIFICATION
- ⊗ CALCULATED SECTION CORNER

AREA DATA:

| DESCRIPTION | ACRES | SQUARE FEET |
|---------------------------------|--------------------|--------------------------|
| LOT 1 (COMMERCIAL) | 35.77 ACRES | 1,558,287.36 S.F. |
| TRACT "A" (ROADWAY) | 0.12 ACRES | 5,106.28 S.F. |
| TRACT "B" (ROADWAY) | 0.51 ACRES | 22,150.22 S.F. |
| TOTAL AREA FOR THIS PLAT | 36.40 ACRES | 1,585,543.86 S.F. |